



Killeen Security Products

Killeen Machine Tool Co., Inc.
33 Hermon Street
Worcester, MA 01610

1-800-577-5397
www.iccore.com

e-mail: sales@iccore.com
phone: 508-798-3200
fax: 508-753-2183



At KSP, Customer Service is Second to None



Interchangeable with: *BEST • ARROW • FALCON • GMS*

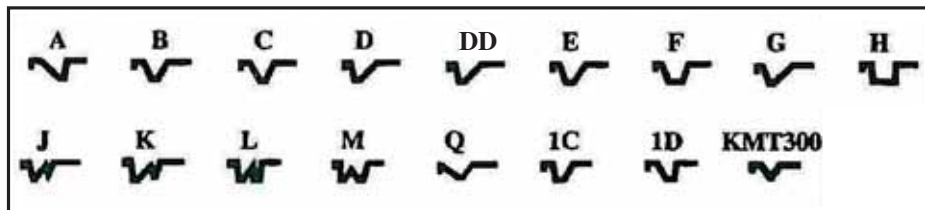
Cores – Uncombined

Part Number	Description	Keyway	Finish
206	6 Pin	X	US04 / US26D
207	7 Pin	X	US04/ US26D

*Order Example

206-A-26D Uncombined

Now offering R Keyway



Finish

03	Bright Brass
04	Satin Brass
10	Satin Bronze
10B	Duro
26	Bright Chrome
26D	Satin Chrome

Special Finishes Available. Contact us for Pricing and Lead-Times

Slide Cap (Falcon Style Core - Uncombined)

Available in the Same Keyways and Finishes as Our Best Style Cores.

*Order Example
206SC -A - 26D



Quality - Price - Delivery That's what KSP is all about!
Email us: sales@iccore.com

Interchangeable Core Products

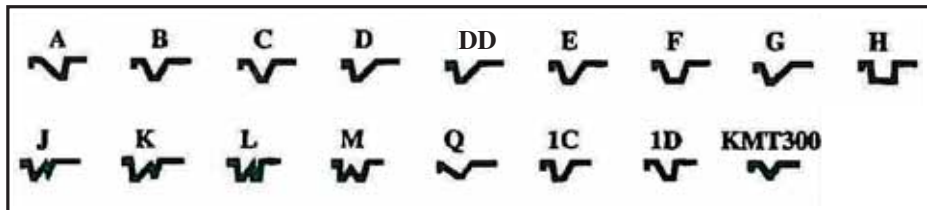
Cores – Combined

Part Number	Description	Keyway	Finish
206C	6 Pin	X	US04 / US26D
207C	7 Pin	X	US04 / US26D

**Order Example*

206C-A-26D Combined

Now offering R Keyway



Construction Cores **Contact us with your requirements**

Cores – Sliding Glass/Showcase Lock

Part Number	Description	Keyway	Finish
206SPL	6 Pin	X	US04/26D
207SPL	7 Pin	X	US04/26D

Available in All Keyways. Cores Only

**Order Example*

207SPL -A-26D



Key Blanks

Part Number
400K

**Order Example*
400K - A



1-800-577-5397

www.iccore.com

Email us: sales@iccore.com



Mortise and Rim Housings Staked-On (Fixed) Cam

Part Number	Length	Description
306	1-1/4"	6 Pin Mortise Housing
307	1-3/8"	6/7 Pin Mortise Housing
307 Long	1-3/4"	6/7 Pin Mortise Housing
307 XLong	1-7/8"	6/7 Pin Mortise Housing
308		6/7 Pin Rim Housing
308-6		6 Pin Rim Housing
316		6 Pin Tapered Head Housing
317		6/7 Pin Tapered Head Housing



Housing Cams (Bag of 20)

Part Number	Description
600	Standard Cam
601	Adams Rite Cam
602	Clover Cam
602-S	Sargent Cam
602-L	Schlage Cam



Housing Cams Staked-On



600

601

602

602L

602S



Quality - Price - Delivery That's what KSP is all about!
Email us: sales@iccore.com

Interchangeable Core Products

Mortise Housings Screw-On (Removable) Cam (All Housings Less Cam)

Part Number	Length	Description
406	1-1/4"	6 Pin Mortise
407	1-3/8"	6/7 Pin Mortise
407 Long	1-3/4"	6/7 Pin Mortise
407 XLong	1-7/8"	6/7 Pin Mortise
416		6 Pin Tapered Head
417		6/7 Pin Tapered Head

Housing Cams K-Series Screw-On (Bag of 10)

Part Number	Description
K700	Standard Cam
K701	Adams Rite Cam
K702	Clover Cam
K702-S	Sargent Cam
K702-L	Schlage Cam

Each Cam sold in bags of 10



Cam Pack K-Series Part Number CKS-5 (1 each - K700, K701, K702, K702S, K702L)



1-800-577-5397

www.iccore.com

Email us: sales@iccore.com



408 Convertible Housing Kit (All Housings Less Cam)

Rim & Mortise Function in One Assembly!

- Eliminate Excess Inventory and SKU's
- Provides for Flexibility
- No Need to Disassemble Drive Assembly
- Compatible with These LFIC & SFIC Cores
(Individually Boxed)

		Length
Sargent	P/N 408 Sargent (finish)	1.24"
Schlage	P/N 408 Schlage (finish)	1.37"
Medeco	P/N 408 Medeco (finish)	1.22"
Corbin Russwin	P/N 408 Corbin Russwin (finish)	1.12"
Yale	P/N 408 Yale (finish)	1.40"
KSP (SFIC)	P/N 408 KSP (finish)	1.24"
COMPATIBLE WITH BEST • ARROW • FALCON • GMS		



Extra 408 Hardware Kit

408-CB Extra: Tailpiece, Adapter and Screws (Rim Function)
Collars, Back Plate, Break-away Screws
Individually Bagged

Cam Pack K-Series Part Number CKS-5
(1 each - K700, K701, K702, K702S, K702L)



Quality - Price - Delivery That's what KSP is all about!
Email us: sales@iccore.com

Interchangeable Core Products

408 Convertible Housing Kits *(All Housings Less Cam)*

Convertible Housings - easily convert between Mortise and Rim!

- Eliminate Excess Inventory and SKU's
- Provides for Flexibility
- No Need to Disassemble Drive Assembly!
- Designed with the locksmith in mind,

Contents:

- Qty. 6, 408 Housings, Choose from SFIC, Schlage, Sargent, Corbin Russwin, Yale and Medeco styles
- Qty. 5 each cam: K700, K701, K702, K702L & K702S
- Screws for assembling tailpiece or cam, with Loctite pre-applied.
- Qty. 3 Tailpieces, Adapter (patent pending) for rim installation.
- Qty. 3 sets of breakaway screws and back plates of trim installation.
- Miscellaneous Collars



SFIC



Schlage



Sargent



Corbin
Russwin



Yale



Medeco

1-800-577-5397

www.iccore.com

Email us: sales@iccore.com



Schlage Large Format Mortise & Rim Housings ***(All Housings Less Cam)***

Part Number 407-LFIC
Description Large format mortise cylinder housing

Part Number 308-LFIC
Description Large format rim cylinder housing

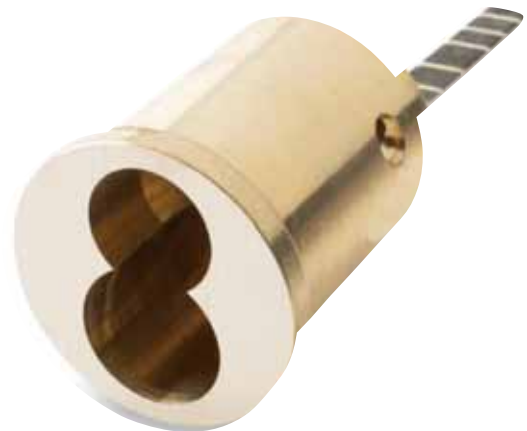
- **Packaged with (2) screws, backplate and collar**

Available Finishes

- 03 Bright Brass
- 04 Satin Brass
- 10 Satin Bronze
- 10B Duro
- 26 Bright Chrome
- 26D Satin Chrome



Uses the Same K-Series Screw-On Cams
as Our Standard Housings
(Cams on Page 5 or Kit on Next Page)



Quality - Price - Delivery That's what KSP is all about!
Email us: sales@iccore.com

Interchangeable Core Products

K - Series Cam Kit

Part Number	K7CAMKIT
Description	Cam Kit with various cams, screws and accessories

Includes the following:

- Qty 10 - K700 (Standard) screw-on cams
- Qty 10 - K701 (Adams Rite) screw-on cams
- Qty 10 - K702 (Clover) screw-on cams
- Qty 10 - K702S (Sargent) screw-on cams
- Qty 10 - K702L (Schlage) screw-on cams

- 100 pcs - Cam Screws (pre-applied Loctite)
- Variety of solid spacers
- Variety of step spacers
- SFIC - Turn Knob



I/C Core Pin Kit

Part Number	KSP A2-Kit
Ergonomic Tray Design	

Includes All A2 Pin Sizes

- 50 pins each size
- Short Springs
- Long Springs
- Stamped Caps
- Machined Caps



1-800-577-5397 www.iccore.com
Email us: sales@iccore.com



Rings & Collars

Part Number	Description	Size
500	Rim	-
501	Step Mortise	1/8" - 1/4"
502	Solid Collar	1/8" - 1/4" - 3/8"
503-26D	Solid Tapered Collar	3/16" Spacer
400-CA-26D	Hardened Spring Collar	-



Finish

03	Bright Brass
10	Satin Bronze
10B	Duro
26D	Satin Chrome



503-26D



400-CA-26D



I/C Brass Padlocks

Part Number	Shackle Diameter	Shackle Length
801	5/16"	1-1/8"
802	5/16"	2"
803	5/16"	3"
804	5/16"	4"



Solid Brass Body - 1-3/4" Wide - 2-1/8" Long - 3/4" Thick
Case hardened chrome plated steel shackle



Quality - Price - Delivery That's what KSP is all about!
Email us: sales@iccore.com

Interchangeable Core Products

I/C Core Pin, Caps, Springs

Part Number	Quantity
.108 Diameter	1000 / Pack Only



I/C Housing Drive Pins & Washers

Part Number	Description	Quantity
603	Studs	100 / Pack
604	Small Spacer	100 / Pack
605	Large Spacer	100 / Pack



1-800-577-5397 **www.iccore.com**
Email us: sales@iccore.com



I/C Tools

Part Number	Description
309	SFIC Core Turn Knob
606	Capping Block & Punch
608	Staking Tool
609	SFIC Housing Wrench
610	Ejector Punch
611	Key Cut - Decoding Gauge A2, A3, A4
614	Capping Strips (For New Style A1 Security Capping Press)



309



606



608



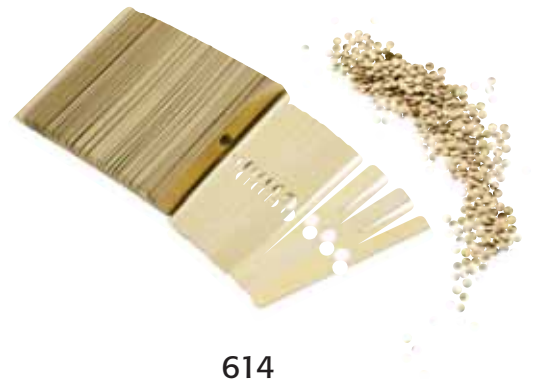
609



610



611



614



Quality - Price - Delivery That's what KSP is all about!
Email us: sales@iccore.com



Notes:



Quality - Price - Delivery That's what KSP is all about!
Email us: sales@iccore.com

The Delta Difference

Satisfaction

We listen to your needs and requests.
Caring about customers and employees.
Service customers to full extent.
We make sure product is packed and shipped properly.

01

Quality

We understand your applications and offer products to meet your needs.
Quality is never compromised.
Every aspect of business is quality checked.

02

Design

We keep designing and offering new products.
Always thinking, inventing, and doing.
We are experts staying on top to lead the way.
We are always testing and improving ,
never resting.

03

Training

Experience in all aspects of our business.
We offer videos for support, training, and installation.
We make sure you and employees understand features, form, and functions.
Always willing to teach.

04

Pricing

We offer programs to meet your needs.
Best value for quality and service.

05

Communication

We keep an open dialog between everyone.
Understand what is being requested and needed.
We always follow up.

06

07

Experience

We make it happen.
Maintain inventory levels to support business.
Willing to do the extra.
Willing to partner on projects.



Camlock

Part Number:

CI13751203BCOF1

CI13751203BCOF2

CI13750609BCOF1

CI13750609BCOF2

Keypulls

1

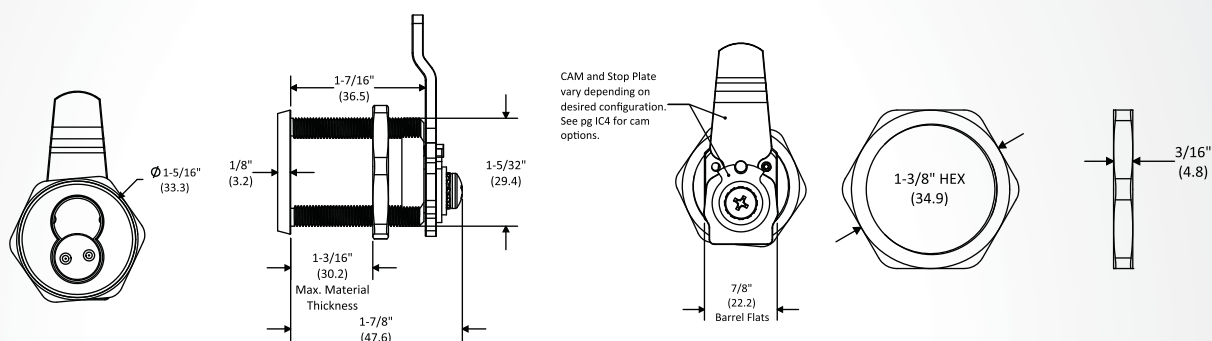
2

1

2

Note: Parenthesis dimensions in (mm)

Different rotations: 0306, 0912, 1209, etc and other options available, call for part #.



Easy Mount Camlock

Part Number:

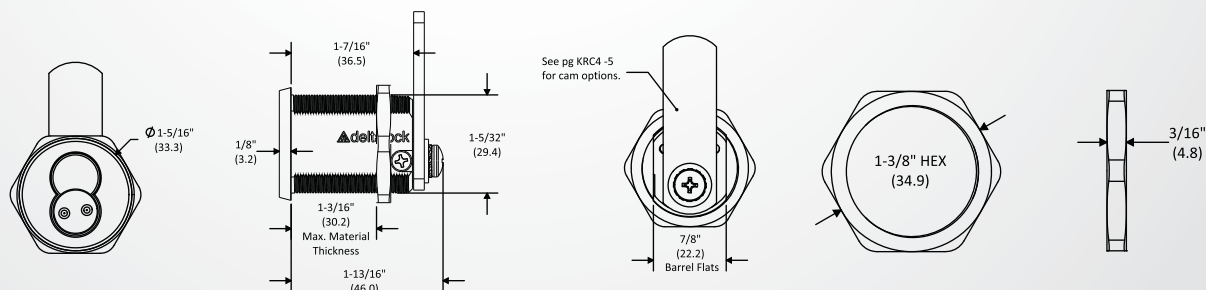
CI13751203BCEM1

Keypulls

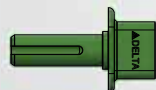
1

Note: Parenthesis dimensions in (mm)

Different rotations: 0306, 0912, 1209, etc and other options available, call for part #.



Included in each order.

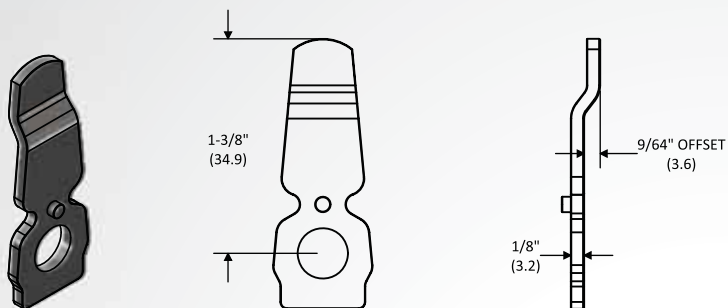


KSP

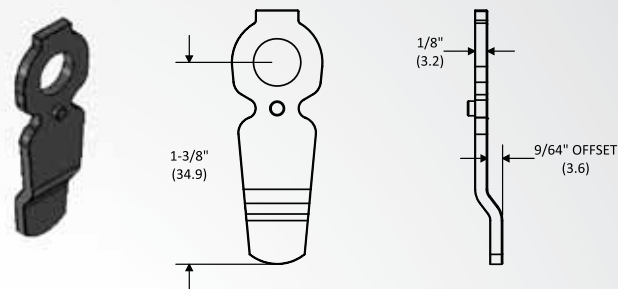
Featuring Quality Products By:

delta lock

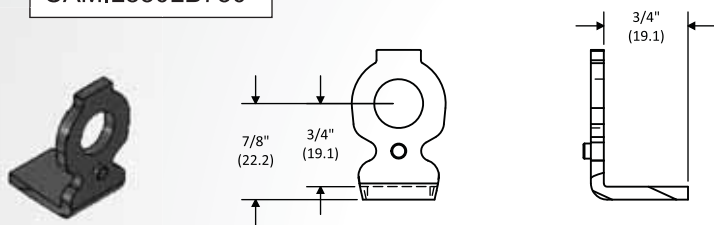
CAMI1203L1875B0140



CAMI0609L1875B0140

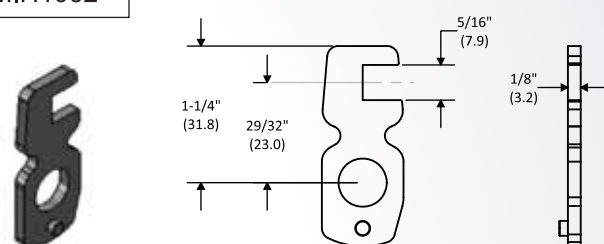


CAMIL830LB750



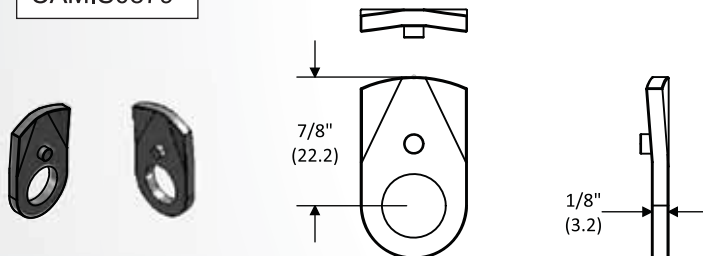
Note: CAMIL830LB750 designed for rotations 0603 and 0609.

CAMIH1062

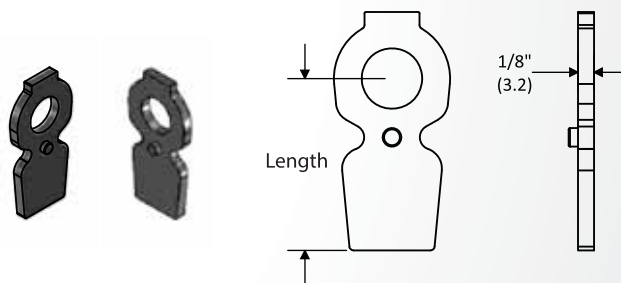


Note: CAMIH1062 designed to be locked at 9 o'clock and open at 12 o'clock.

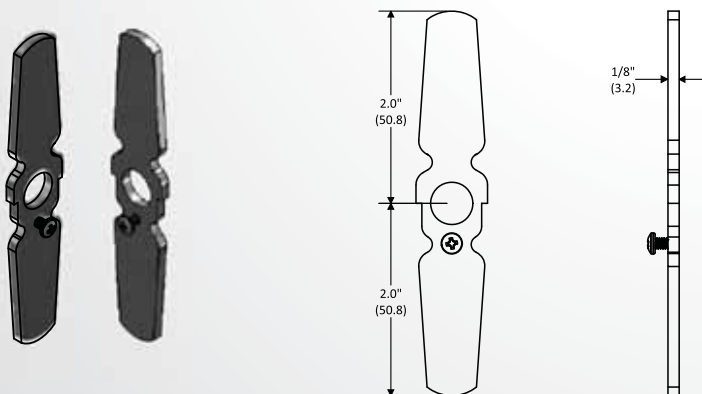
CAMIS0879



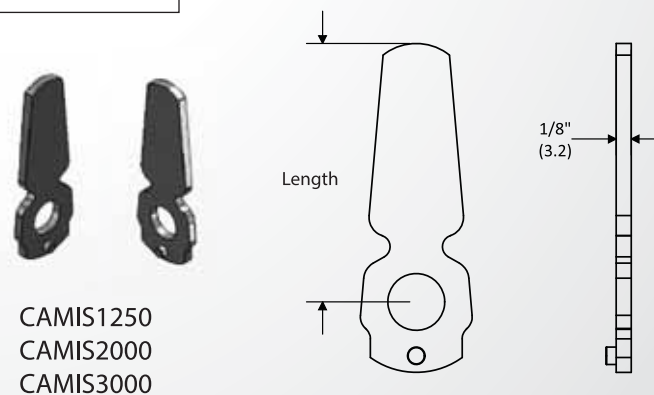
CAMI0609S1250



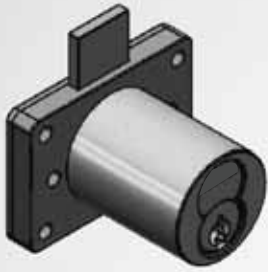
CAMI0609DOUBLE2000



CAMISXXXX



CAMIS1250
CAMIS2000
CAMIS3000



Mini Drawer Lock*

Part Number:

DIMINID375BCXX1

DIMINIE375BCXX1

DIMINIX375BCXX1

Bolt Length

1" (25.4mm)

1-1/4" (31.8mm)

Custom 2" (50.8mm) Max

Keypulls

1

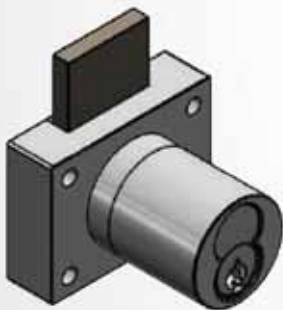
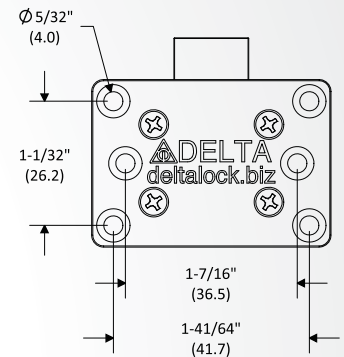
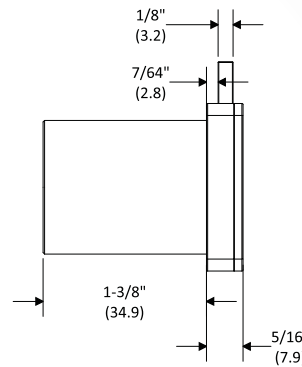
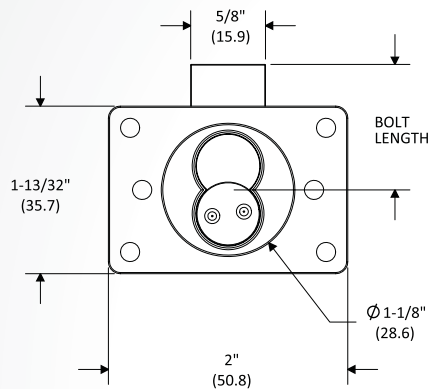
1

1

Typical bolt throw 5/16" (7.9mm)

Note: Parenthesis dimensions in (mm)

*Patent Pending



Drawer Lock Deadbolt "CB"

Part Number:

DI1344D750BCCB1

DI1344D750BCCB2

Bolt Length

1-1/2" (38.1mm)

1-1/2" (38.1mm)

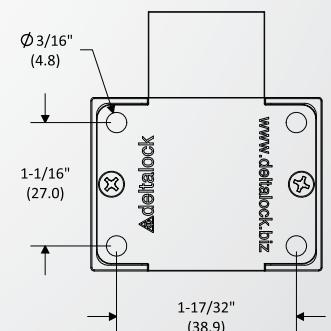
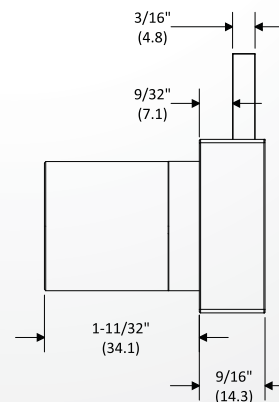
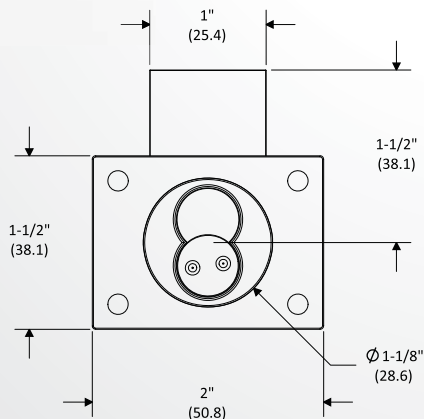
Keypulls

1

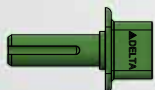
2

Typical bolt throw 3/4" (19.1mm)

Note: Parenthesis dimensions in (mm)



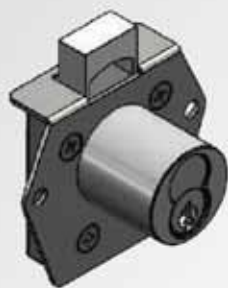
Included in each order.



KSP

Featuring Quality Products By:





Package includes
(2x) #8 x 5/8"
Mounting Screws



Rim Deadbolt Vertical

Part Number:

DI1125D500BCRV1

DI1125D500BCRV2

Bolt Length

1-3/8" (34.9mm)

1-3/8" (34.9mm)

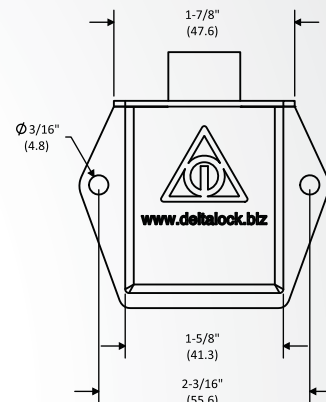
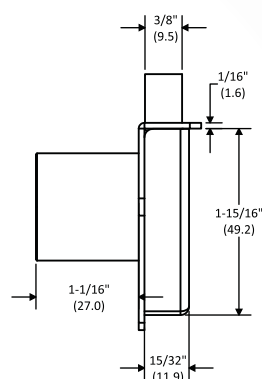
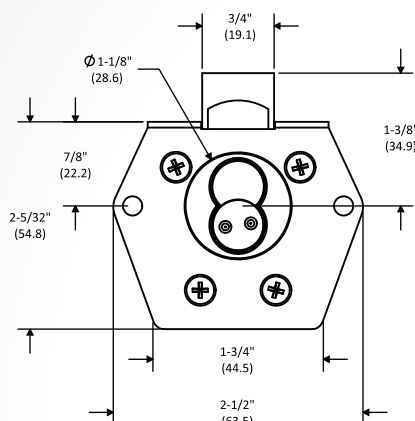
Keypulls

1

2

Typical bolt throw 1/2" (12.7mm)

Note: Parenthesis dimensions in (mm)



Package includes
(2x) #8 x 5/8"
Mounting Screws



Rim Deadbolt Inverted

Part Number:

DI1125D500BCRI1

DI1125D500BCRI2

Bolt Length

1-3/8" (34.9mm)

1-3/8" (34.9mm)

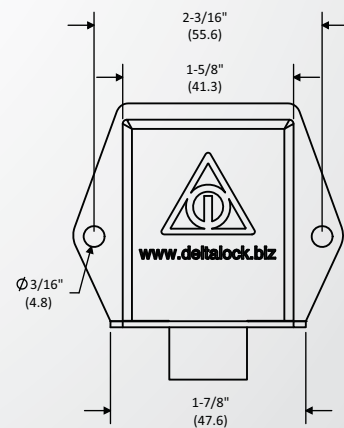
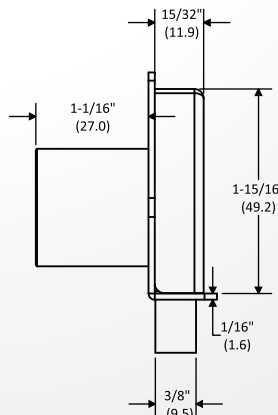
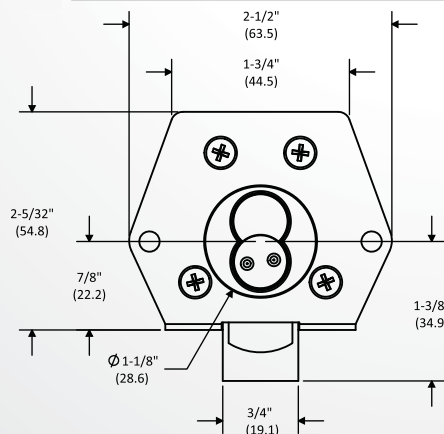
Keypulls

1

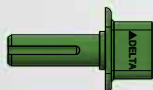
2

Typical bolt throw 1/2" (12.7mm)

Note: Parenthesis dimensions in (mm)



Included in each order.





Package includes
(2x) #8 x 5/8"
Mounting Screws



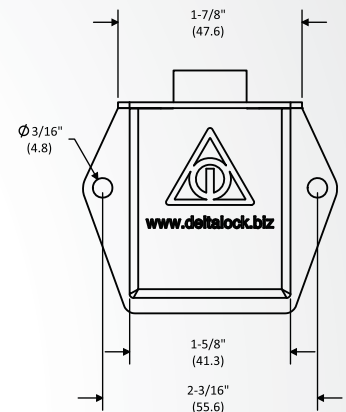
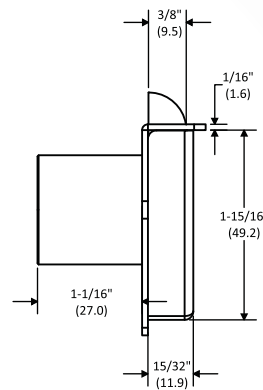
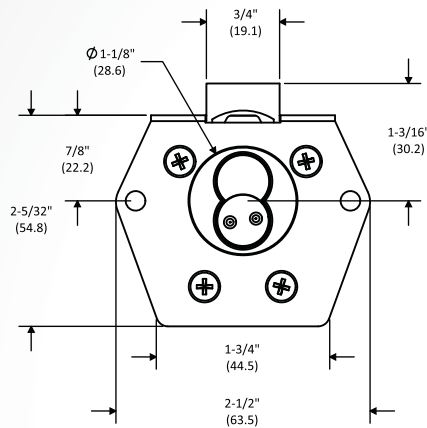
Rim Latchbolt Vertical

Part Number:
DI1125L375BCRV1

Bolt Length
1-3/16" (30.2mm)

Keypulls
1 non-captive

Typical bolt throw 3/8" (9.5mm)
Note: Parenthesis dimensions in (mm)



Package includes
(2x) #8 x 5/8"
Mounting Screws



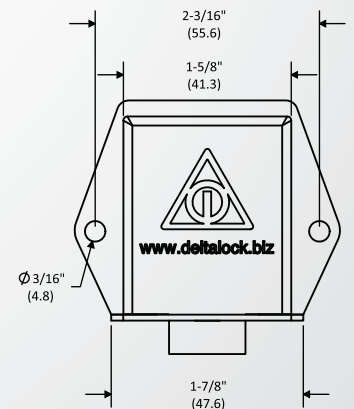
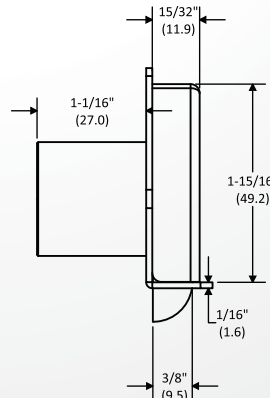
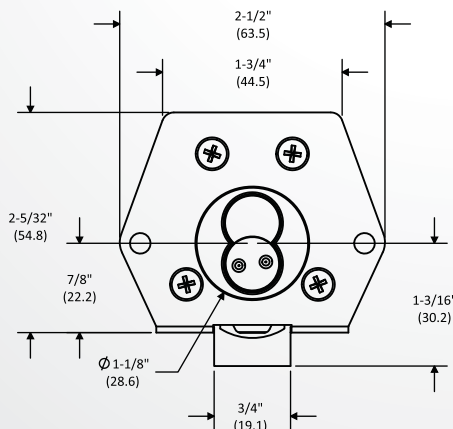
Rim Latchbolt Inverted

Part Number:
DI1125L375BCRI1

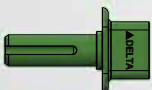
Bolt Length
1-3/16" (30.2mm)

Keypulls
1 non-captive

Typical bolt throw 3/8" (9.5mm)
Note: Parenthesis dimensions in (mm)



Included in each order.



KSP

Featuring Quality Products By:





Package includes
(2x) #8 x 5/8"
Mounting Screws



Mortise Deadbolt Vertical

Part Number:

DI1125D500BCMV1

DI1125D500BCMV2

Bolt Length

1-3/8" (34.9mm)

1-3/8" (34.9mm)

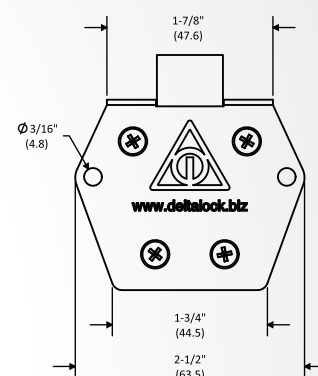
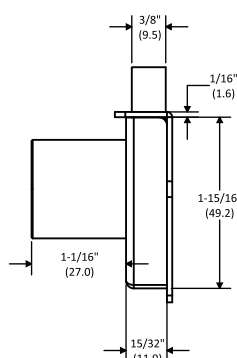
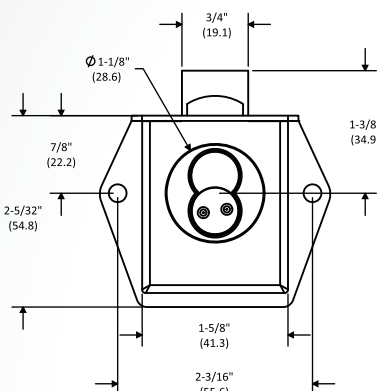
Keypulls

1

2

Typical bolt throw 1/2" (12.7mm)

Note: Parenthesis dimensions in (mm)



Package includes
(2x) #8 x 5/8"
Mounting Screws



Mortise Deadbolt Inverted

Part Number:

DI1125D500BCMI1

DI1125D500BCMI2

Bolt Length

1-3/8" (34.9mm)

1-3/8" (34.9mm)

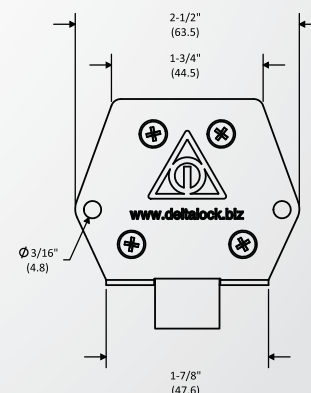
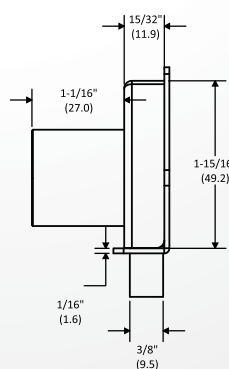
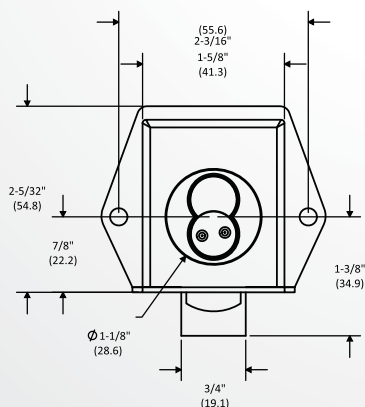
Keypulls

1

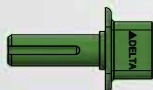
2

Typical bolt throw 1/2" (12.7mm)

Note: Parenthesis dimensions in (mm)



Included in each order.





Package includes
(2x) #8 x 5/8"
Mounting Screws



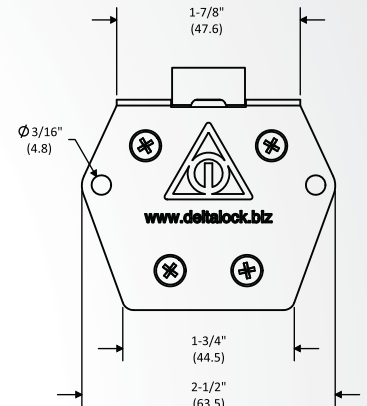
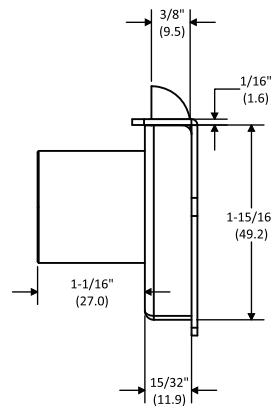
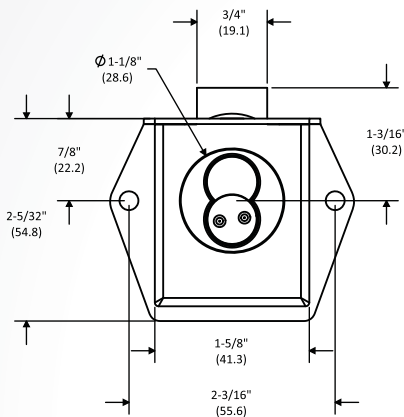
Mortise Latchbolt Vertical

Part Number:
DI1125L375BCMV1

Bolt Length
1-3/16" (30.2mm)

Keypulls
1 non-captive

Typical bolt throw 3/8" (9.5mm)
Note: Parenthesis dimensions in (mm)



Package includes
(2x) #8 x 5/8"
Mounting Screws



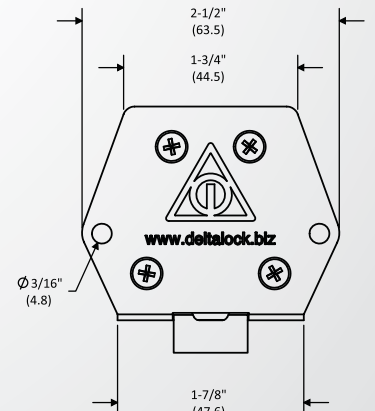
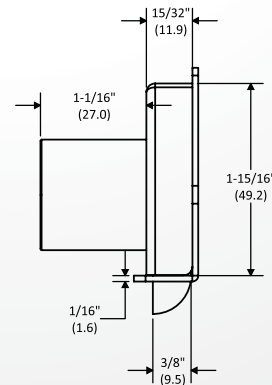
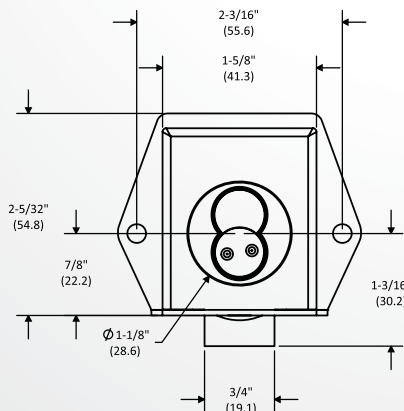
Mortise Latchbolt Inverted

Part Number:
DI1125L375BCMI1

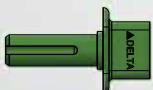
Bolt Length
1-3/16" (30.2mm)

Keypulls
1 non-captive

Typical bolt throw 3/8" (9.5mm)
Note: Parenthesis dimensions in (mm)



Included in each order.





Keypulls

*Patent Pending



Keypulls

22 p (508)-798-3200 • f (508)-753-2183 • www.iccore.com • sales@iccore.com



T-Bolt Plunger Lock

Part Number:

SI1750T250BCXX1

SI1750T250BCXX2

Bolt Length

9/16" (14.3mm)

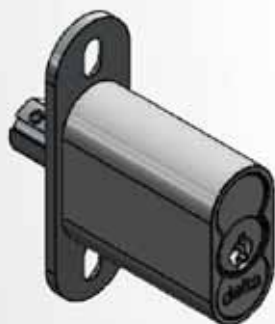
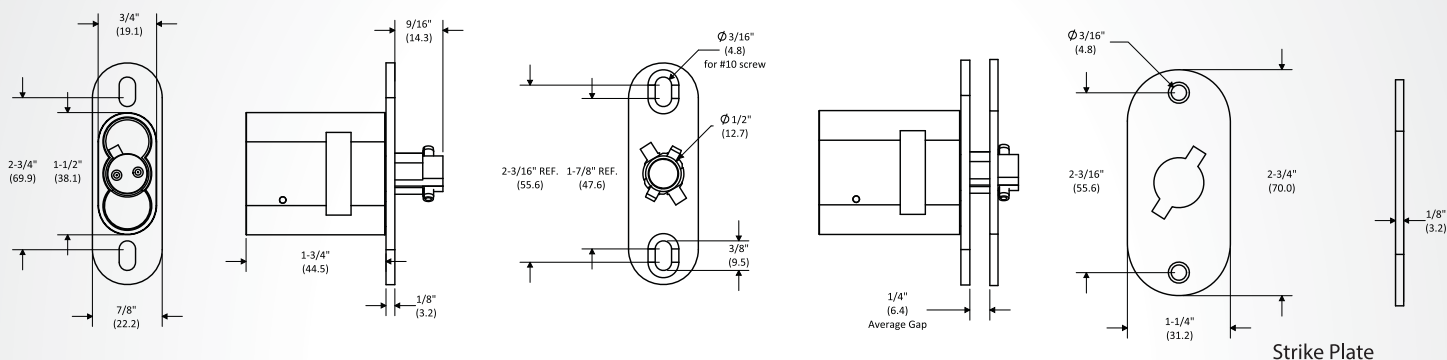
9/16" (14.3mm)

Keypulls

1

2

Note: Parenthesis dimensions in (mm)



Plunger Lock (Captive only)

Part Number:

SI1750R500BCBB1

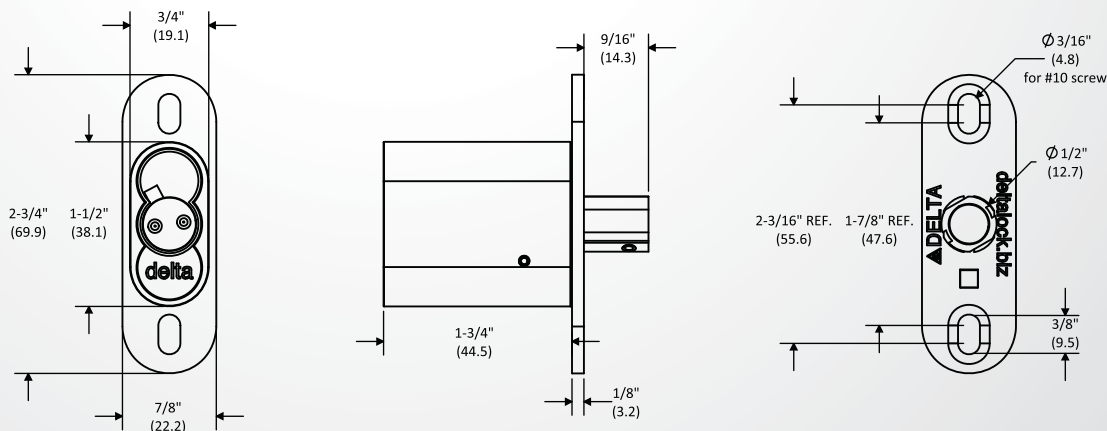
Bolt Length

9/16" (14.3mm)

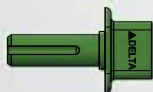
Keypulls

1

Note: Parenthesis dimensions in (mm)



Included in each order.



Featuring Quality Products By:



**Glass Plunger Lock****Part Number:**

GI0500R000BCGL2

Material Thickness

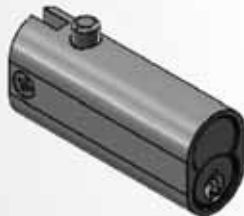
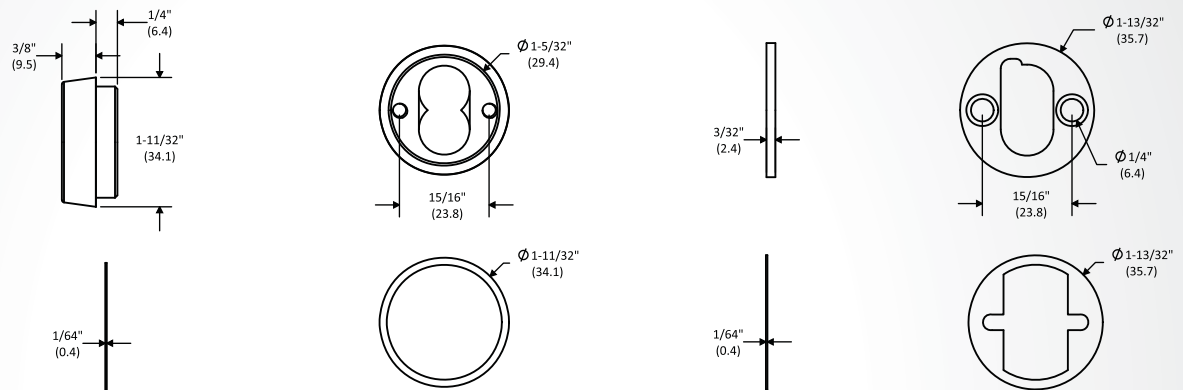
1/4" (6.4mm) typical

Keypulls

Core Dependent

Must use Split Lug or Extended cores see pg IC3.

Note: Parenthesis dimensions in (mm)

**File Cabinet Lock****Part Number:**

MI2281DL156BCF1

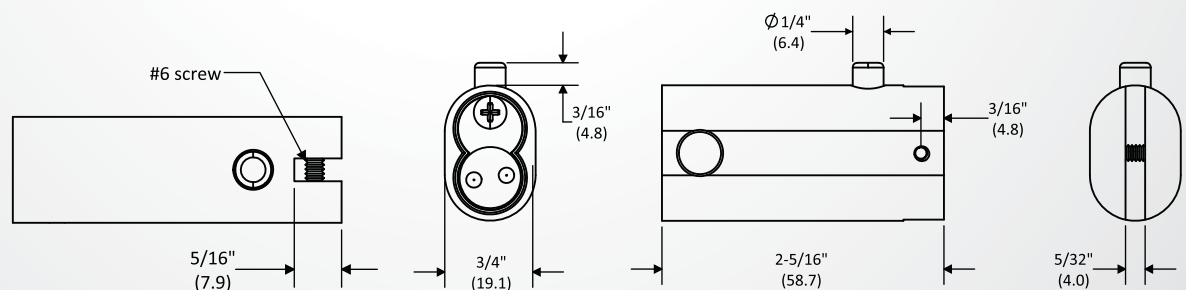
Bolt Length

3/16" (4.8mm)

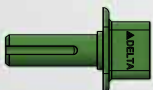
Keypulls

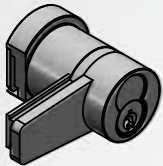
1 non-captive

Note: Parenthesis dimensions in (mm)



Included in each order.

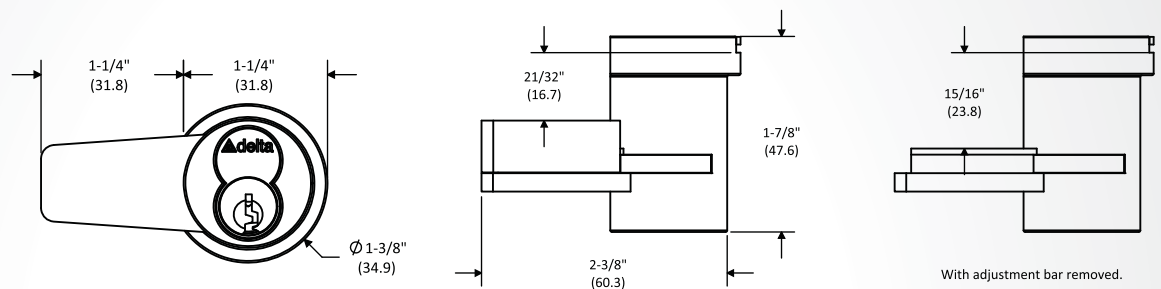




ICore Ratchet Lock Housing

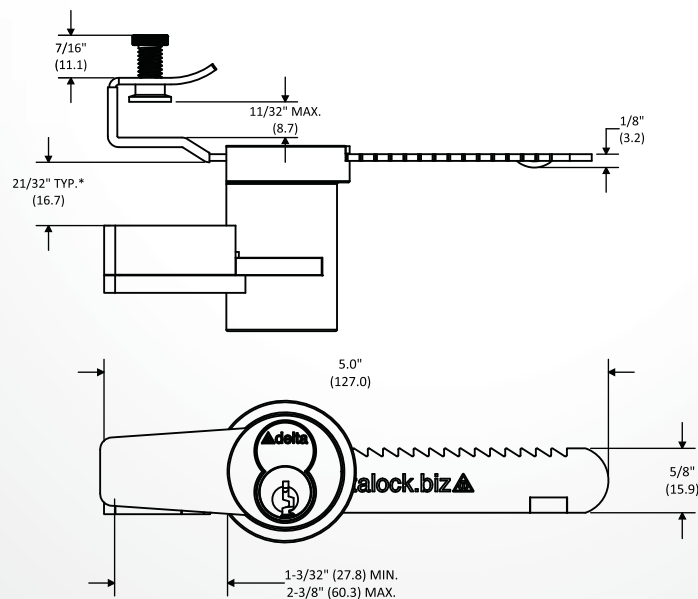
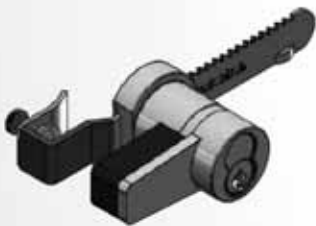
Comes standard with the base package: RI1875R315PCHSG.

This package can be modified with the additional purchase of the various bars on page: IC12.

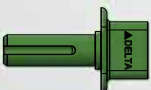


Base Package.

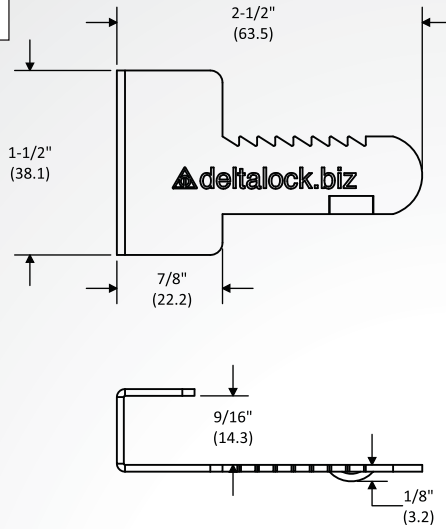
Part Number: RI1875R315PCHSG



Included in each order.

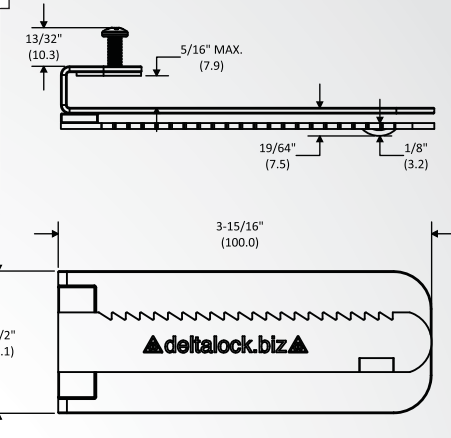


RU1250CONCBAR



RU1250ADEXKIT

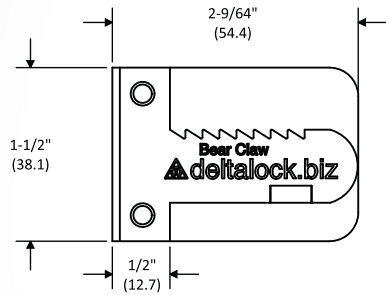
Adhesive bar kit



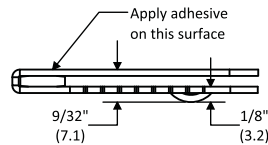
Kit includes:
Adhesive pack
Alcohol pad x 2
Plastic card
Roughing pad 1"x1"
Instructions

RUADHEBASEPLKIT

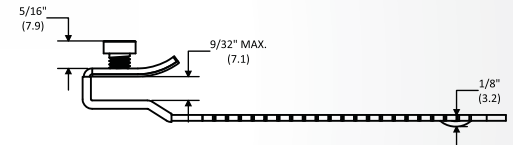
Adhesive bar kit



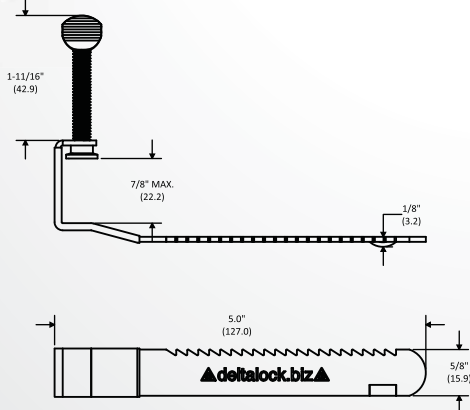
Kit includes:
Adhesive pack
Alcohol pad x 2
Plastic card
Roughing pad 1"x1"
Instructions



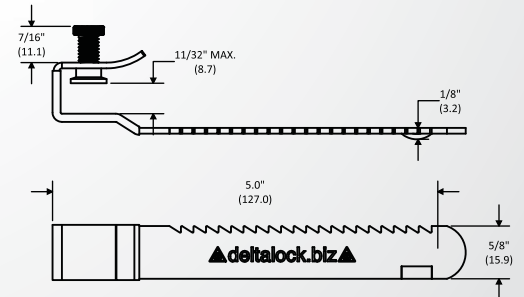
RU1250REGBAR2MG270KIT



RU1250ADJBAR2



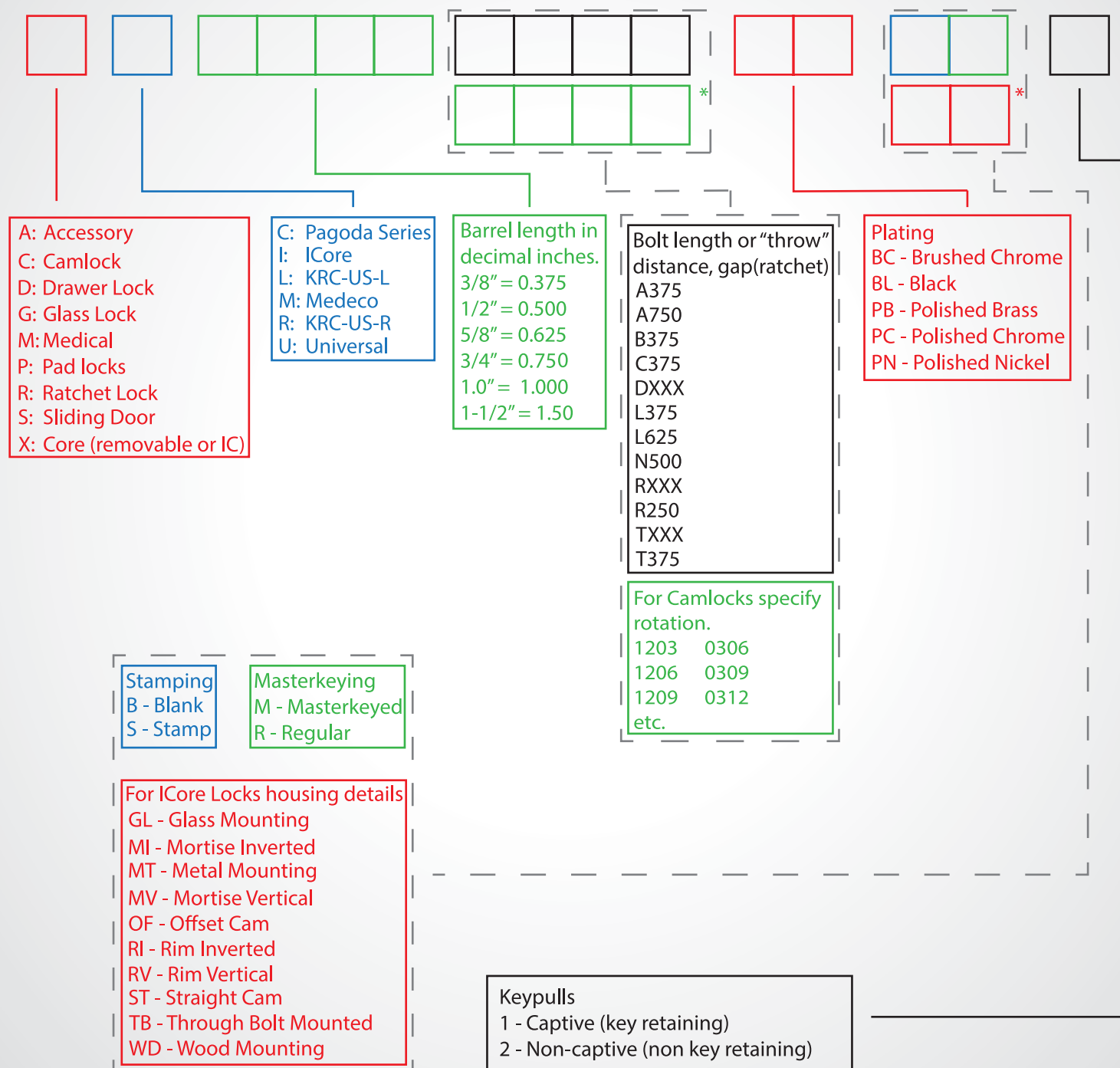
RU1250REGBAR3MG315



Note: Parenthesis dimensions in (mm)

Delta general part number breakdown. Most of our part numbers will adhere to this system.

15 digit part number:



Backplate The back cover of a lock as viewed from the face of a lock. Sometimes doubles as the mounting flange/surface.

Backset The distance from the outside face of the outer bolt opening to the center of the keyhole.

Blank (key blank) A key that is shaped to the proper keyway but has not been cut or notched to a specific coding to operate a lock.

Bolt The part of a lock which provides the fastening or engagement by protruding from the case to engage into a striking surface, striking plate, shackle or other member.

Bow (key bow) The part of a key which is held in the fingers when operating the lock.

Cabinet lock A generic term to include all locks of any type for use on showcases, cabinets, or other furniture.

Cam A bolt that is used with a cylinder type lock (cam lock) and usually rotates with the plug/core.

Cam lock A complete locking assembly in the form of a cylinder whose cam is the actual locking bolt.

Captive A lock that has only 1 keypull. The key is unable to be removed when the lock is in the open position.

Closed shackle padlock A padlock that has a minimum amount of shackle visible for added security against cutting.

Core (see Plug)

Cylinder Usually the cylinder with inner co-axial plug which houses the pins, or tumblers (wafers) and springs in the cylinder body.

Cylinder housing With all component parts removed, this forms the main body or housing of a cylinder.

Deadbolt The square-ended bolt of a lock which is moved in both the locking and unlocking directions to provide locking.

Disc tumblers (Wafers) The small shaped discs (usually of metal) in the disc tumbler mechanism which are the means of providing different combinations.

Disc tumbler lock A cylinder lock having disc instead of pin tumblers.

Door closer A device for closing a door or gate automatically after opening.

Double bitted key A key that is cut/notched on both sides of the blade/shank.

Drawer lock A general term referring to styles of locks designed for use in drawers. Usually of a deadbolt or latch bolt design.

Face flange (Lock face) The outer protrusion of a lock that is visible from the mounting surface. Usually in reference to a cam lock.

Flush bolt A door bolt which can be recessed flush into the edge or face of a door or a lock body.

Hasp and staple A fastening in two pieces for a door or box to be secured by a padlock. The hinged part is called the hasp which is fitted to the door or lid of a box and shuts over the staple, which is on the door frame (or other leaf of a pair of doors).

Hook cam A cam bolt with a hook feature that is used to capture a striking surface notch or peg.

Jamb The vertical member of a door or window frame.

Key A small removable device for operating the mechanism of its own lock.

Key blank (see Blank)

Keycode A unique series of alphanumeric character which defines a key.

Keyhole The opening into which the key enters to operate the lock. It is often referred to as the keyway, particularly in a cylinder mechanism.

Keypulls (Keypull location) The position of the key which allows removal.

Key Retaining (see Captive)

Latch (Latch bolt) Usually a beveled spring-loaded bolt which cannot be mechanically locked into place.

Lock A device operated usually, but not always, by a key, having one or more bolts or other members to fasten and secure a door, drawer, or other member.

Lockable bolt A bolt that can be shot and locked in position by use of a removable key.

Long shackle (LS) A padlock shackle with a greater amount of clearance than the normal standard shackle.

Lubrication A substance to be applied to allow smooth movement.

Master Key A key which will open every lock in a master keyed system.

Master Keyed A lock capable of being operated by a base key as well as 1 or a number of master keys.

Mortise A hole or recess cut into a part, designed to receive a corresponding projection (a tenon) on another part so as to join or lock the parts together.

Mortise lock A lock designed such that its intended installation requires a mortised part.

Non-Captive A lock that has more than 1 keypull (usually 2 but it's possible to have more). The key can be removed when the lock is in the open position.

Non-Key Retaining (see Non-Captive)

Padlock A portable locking device. The locking member is a circular hinged sliding or swiveled shackle which passes through a hole in a staple, locking bar, or similar member.

Plug (Core) The part of a lock cylinder into which the key enters and turns.

Rim lock A lock or latch that is fitted by screwing on to the inside face of the installation surface (door / drawer).

Shackle The hinged, sliding, or swiveling loop shaped member of a padlock.

Shoot (of bolt) The distance a spring bolt moves under the action of its spring.

Spring shackle padlock A padlock, the shackle of which springs open when unlocked, and is locked by snapping to.

Spring bolt (see Latch bolt)

Staple Part of a hasp and staple for use with a padlock. The padlock shackle passes through the eye or hole in the staple.

Striking plate (Strike) It is a fixed metal plate with a surface of hole into which a bolt will engage.

Throw (Bolt throw) The distance a deadbolt moves retracting when open and extruding when locking.

Thumb turn A knob or handle which is gripped between thumb and finger to operate the lock.

Wafers (see Disc tumblers)



Thank You for your business!

~ KSP & DeltaLock





Notes:



Quality - Price - Delivery That's what KSP is all about!
Email us: sales@iccore.com



Killeen Security Products

Killeen Machine Tool Co., Inc.

33 Hermon Street

Worcester, MA 01610

1-800-577-5397 • www.iccore.com

e-mail: sales@iccore.com

phone: 508-798-3200 • fax: 508-753-2183

About Killeen Security Products

KSP proudly manufactures Small Format Interchangeable Cores, Mortise and Rim Housings. All of our products have been made in the USA since 1983. We are located in Worcester, Massachusetts.

Within a year of its concept KSP shipped its first order. 34 years later, KSP has built a strong reputation in the security industry for its quality and delivery and our products can be found throughout the world.

We manufacture over 15 different keyways for the Small Format Interchangeable Core products that are interchangeable with Best, Arrow, Falcon & GMS. We have key blanks available for every keyway we supply. KSP manufactures Mortise housings that have both the staked on and screw on cams available. Recently we have added a convertible Mortise/Rim housing in the following styles, Medeco, Sargent, Schlage, Yale, Corbin Russwin and our own KSP (SFIC). We supply locksmith tools such as capping blocks, housing wrenches and staking tools. We are very proud to say that our products are made in the USA. For a complete listing of our products please go to our website www.iccore.com.

KSP can assist your company in setting up keying systems providing the utmost security for your business. We can set up systems for all levels, from something as complex as a Great Great Grand Master Key system to something simple as keying alike to a Control Key. We can combine cores to fit all of your needs and maintain these records for you. KSP is known for cores & housings but we also have the ability to assist our customers with custom applications. If you have a special project, please give us a call. We would welcome the opportunity to be of assistance. If you don't ask, we can't help. At KSP customer service is second to none.

Please contact us with any questions you may have.

Thank you,
The KSP Team



Gene Degre

President

Killeen Security Products



Karen Zawalich

Sales & Marketing

Killeen Security Products